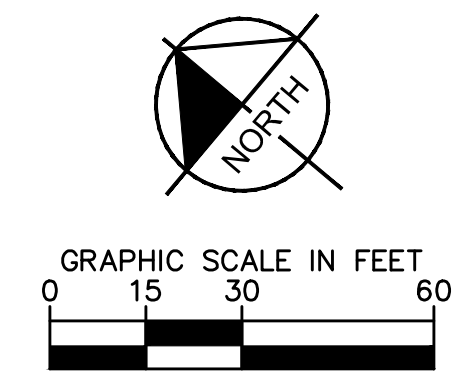


Plotted By: Harris, Chris Sheet Set: KHA Layout: Layout1 (2) February 09, 2016 05:19:11pm K:\CST\_Civil\66077051-TAMU PA 16\_54\DWG\Exhibits\C-Overall-EXHIBIT.dwg  
 This document, together with the concepts and designs presented herein, is intended only for the specific purpose and client for which it was prepared. Reuse of this document without written authorization and approval by Kimley-Horn and Associates, Inc. shall be without liability to Kimley-Horn and Associates, Inc.



**LEGEND**

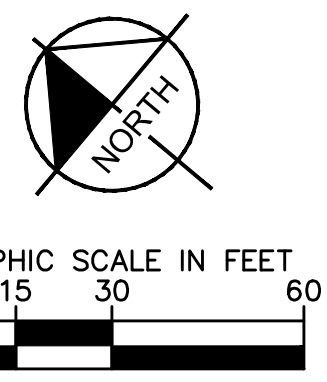
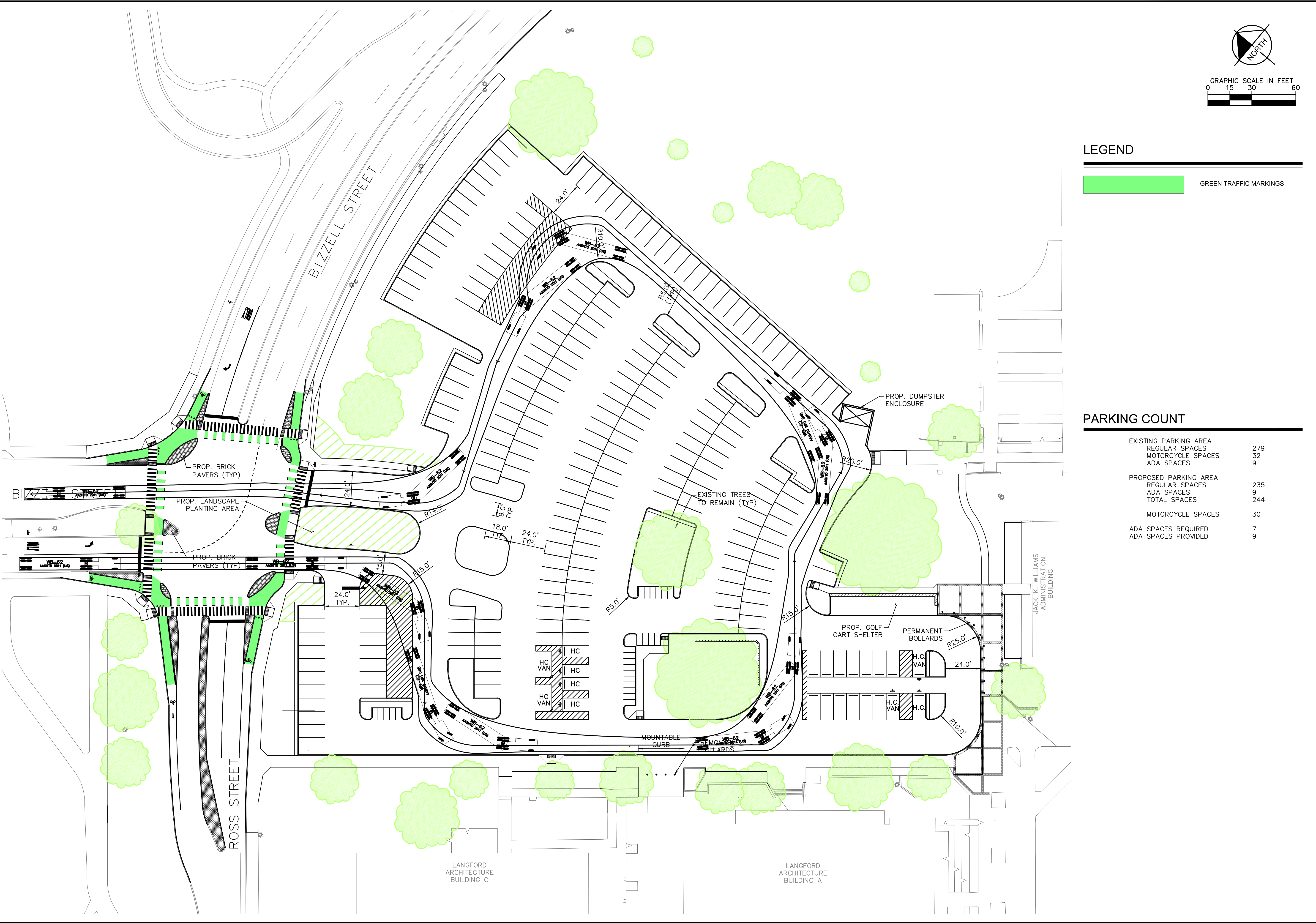
GREEN TRAFFIC MARKINGS

**PARKING COUNT**

EXISTING PARKING AREA	
REGULAR SPACES	279
MOTORCYCLE SPACES	32
ADA SPACES	9
PROPOSED PARKING AREA	
REGULAR SPACES	235
ADA SPACES	9
TOTAL SPACES	244
MOTORCYCLE SPACES	30
ADA SPACES REQUIRED	7
ADA SPACES PROVIDED	9

<b>Kimley»Horn</b>	© 2016 KIMLEY-HORN AND ASSOCIATES, INC. TEXAS REGISTERED ENGINEERING FIRM F-928 2800 SOUTH BRYAN, TX 77802 PHONE: 979-775-9595 FAX: 979-775-9599 WWW.KIMLEY-HORN.COM							
<b>PARKING AREA 16 &amp; 54</b> RECONSTRUCTION PREPARED FOR <b>TEXAS A&amp;M UNIVERSITY</b> COLLEGE STATION, TEXAS FSP # 2015-04750	<b>PA 16 &amp; 54 SITE</b> LAYOUT EXHIBIT	KHA PROJECT 066077051 DATE JANUARY 2016 SCALE AS SHOWN DESIGNED BY JCH DRAWN BY AMA CHECKED BY JCH						No. REVISIONS DATE BY
SHEET NUMBER	1							

Plotted By: Harris, Chris Sheet Set: KHA Layout: Layout1 (2) February 09, 2016 05:20:01pm K:\CST\_Civil\66077051-TAMU PA 16\_54\DWG\Exhibits\C-Overall-EXHIBIT.dwg  
 This document, together with the concepts and designs presented herein, is intended only for the specific purpose and client for which it was prepared. Reuse of any part of this document without written authorization and approval by Kimley-Horn and Associates, Inc. shall be without liability to Kimley-Horn and Associates, Inc.



**LEGEND**

GREEN TRAFFIC MARKINGS

**PARKING COUNT**

EXISTING PARKING AREA	
REGULAR SPACES	279
MOTORCYCLE SPACES	32
ADA SPACES	9
PROPOSED PARKING AREA	
REGULAR SPACES	235
ADA SPACES	9
TOTAL SPACES	244
MOTORCYCLE SPACES	30
ADA SPACES REQUIRED	7
ADA SPACES PROVIDED	9

<b>Kimley»Horn</b>	© 2016 KIMLEY-HORN AND ASSOCIATES, INC. TEXAS REGISTERED ENGINEERING FIRM F-928 2800 SOUTH BRYAN, TX 77802 SUITE 201 PHONE: 979-775-9595 FAX: 979-775-9599 WWW.KIMLEY-HORN.COM			
<b>PARKING AREA 16 &amp; 54                  RECONSTRUCTION                  PREPARED FOR                  TEXAS A&amp;M UNIVERSITY                  COLLEGE STATION, TEXAS                  FSP # 2015-04750</b>	<b>PA 16 &amp; 54 SITE                  LAYOUT EXHIBIT</b>	KHA PROJECT 066077051	DATE JANUARY 2016	SCALE AS SHOWN
		DESIGNED BY JCH	DRAWN BY AMA	CHECKED BY JCH
SHEET NUMBER	1	REVISIONS	DATE	BY