

01

# Request to Modify John Kimbrough Blvd. Pickard Pass

Madison Metsker-Galarza, Project Manager  
Transportation Services

CBE Maintenance Review Sub-Council Committee Meeting  
Nov. 3, 2020

TEXAS A&M UNIVERSITY



# Background

## Railroad Quiet Zone

- Pedestrian improvements
- Elimination of pedestrian crossing at grade at Wellborn Rd. and John Kimbrough Blvd. intersection

## Subtle changes to improve pedestrian safety and to make it easier to get into and out of the passageway

- Most noticeable change will be more landscaping throughout to match hotel area
- Increasing the sightlines to and size of the openings of the passageway at both ends
- Provide a better pedestrian experience.
- Aligns with other improvements such as Stallings Blvd. and MSC Streets.
- Construction period: early spring - summer 2021

# Modifications to Passageway and Intersection

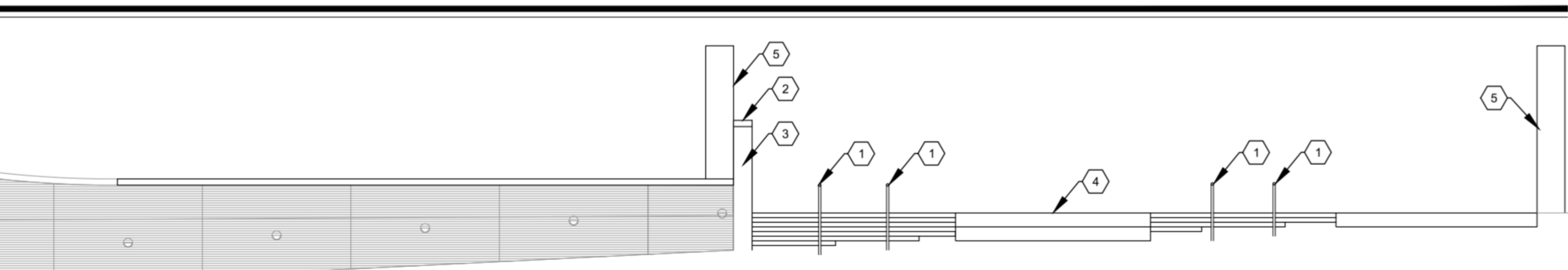
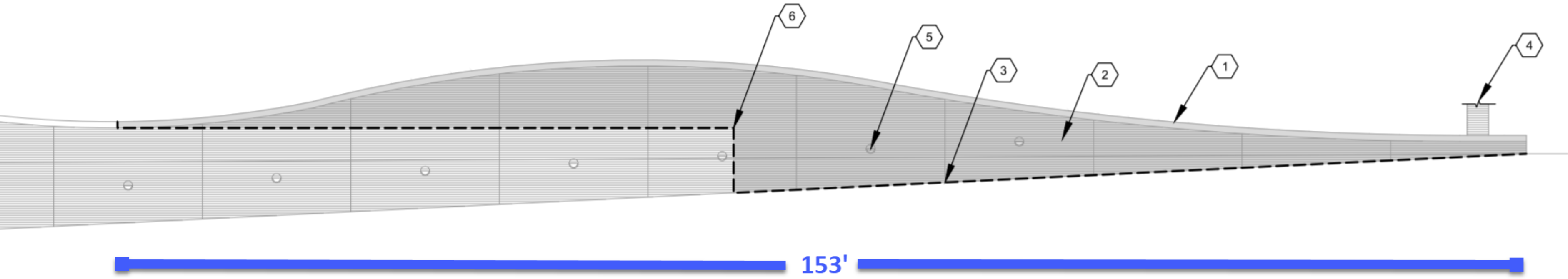
- Opening entrances to the passageway to improve sight lines
- Adding landscape to channelize pedestrians
- Realigning the drive to Lot 61
- Building a masonry and iron fence to channelize pedestrians to new mid-block crossing between Lot 61 and the passageway
- Removing one Live Oak tree at the entrance to Lot 61; adding 19 crepe myrtle trees
- Providing new campus standard lighting and additional campus standard wayfinding signage
- Improving the turn lanes leading to the West Campus Garage
- Alternate options available to remove maroon topped light towers and replacing them

# East End of Passageway



The project removes segment of wall, adds steps and extends these landscaping elements to the west





Matching steps already installed on Kyle Field side of passageway

JOE ROUTT BOULEVARD

23+00

TAMU Hotel and  
Conference Center

EP: 2  
25+00

(B)

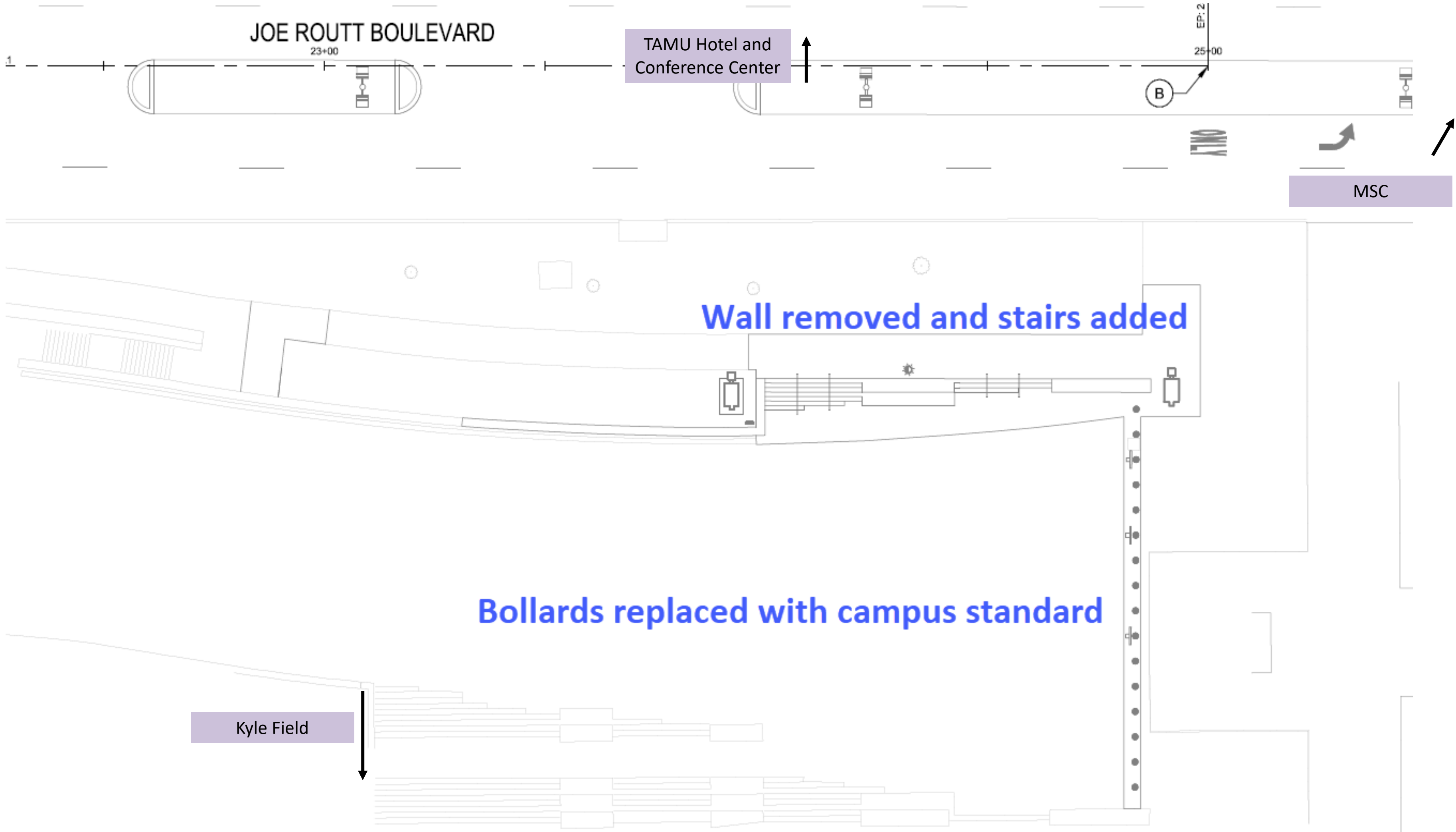
ONLY

MSC

Wall removed and stairs added

Bollards replaced with campus standard

Kyle Field



Rendering looking from Kyle Field  
toward hotel





Rendering showing new view into  
passageway



# John Kimbrough Blvd. and Wellborn Rd. Intersection





YIELD  
ON FLASHING  
YELLOW  
ARROW

Joe Routt Blvd →  
← J. Kimbrough Blvd

WALKING FIGURE

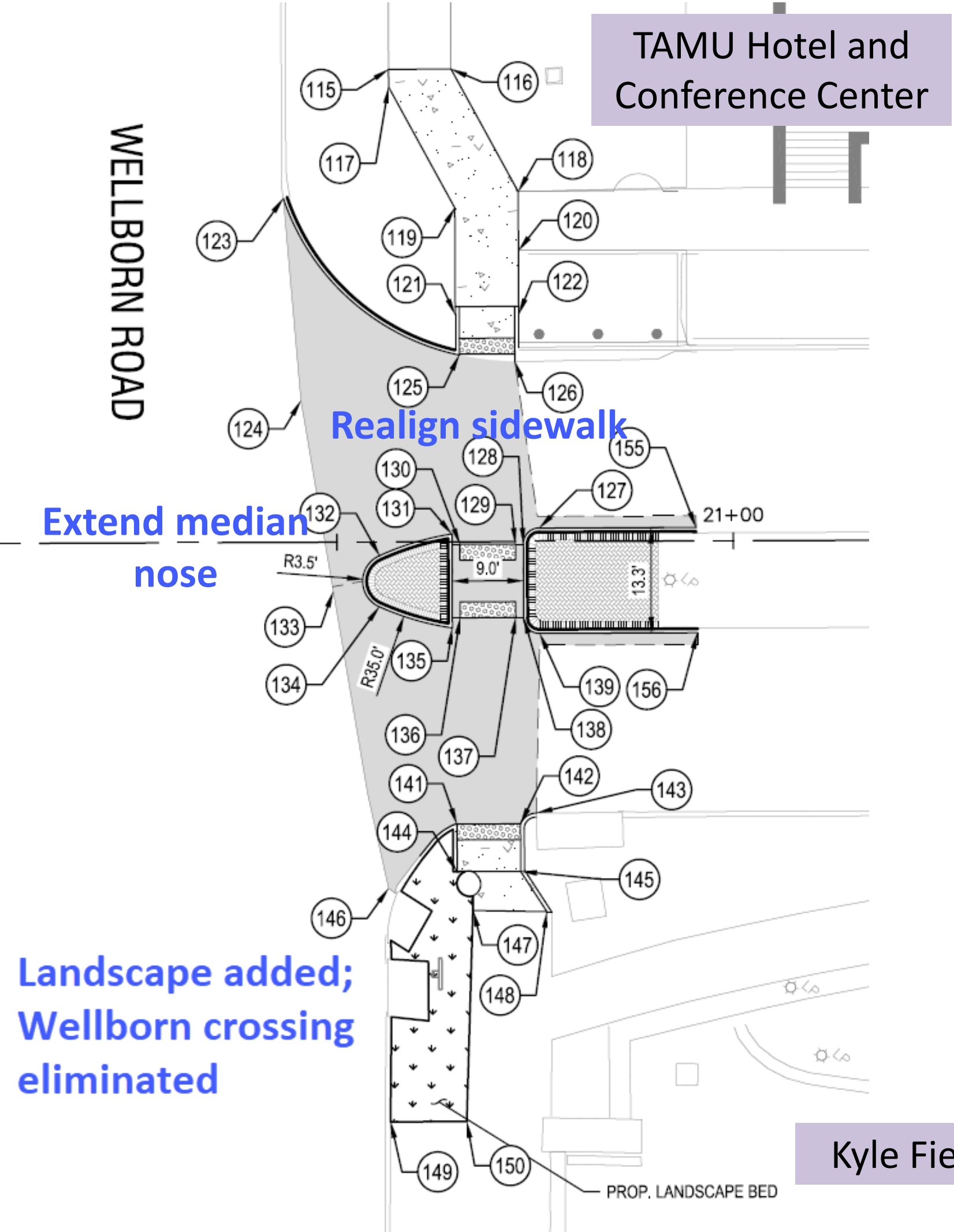
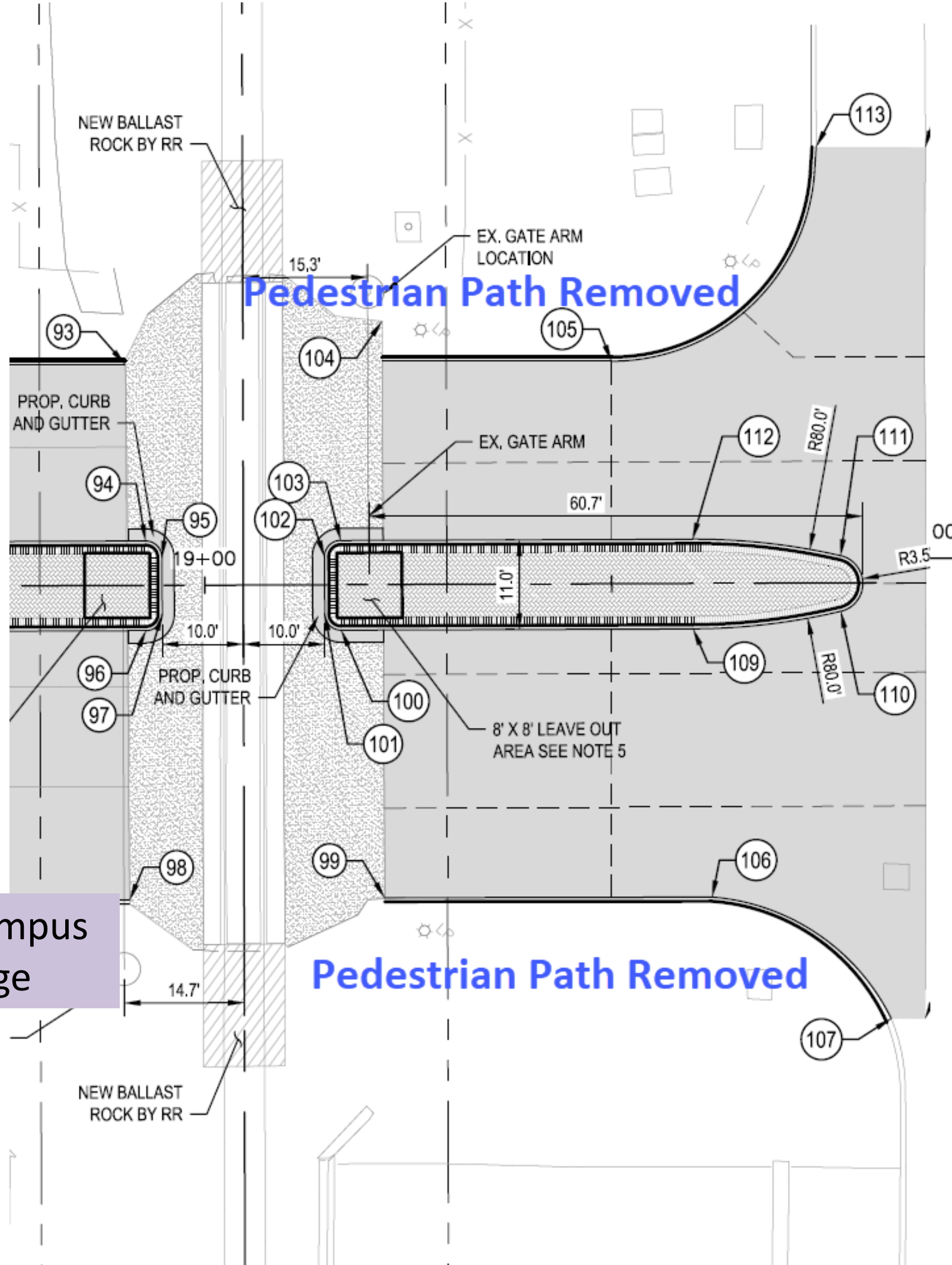
The project realigns this sidewalk and crosswalk and extends the median nosing



The project removes the crosswalk in this image and the pedestrian facilities on the west side of the intersection; extends the landscaping elements to all corners

The project removes this crosswalk and creates a quiet zone compliant median; extends the landscaping elements to all corners





TAMU Hotel and Conference Center

West Campus Garage

Kyle Field

This rendition shows the new landscape elements on all corners, wayfinding signage and the one remaining, realigned north-south crosswalk



# Eliminate West Side Passageway Stairs

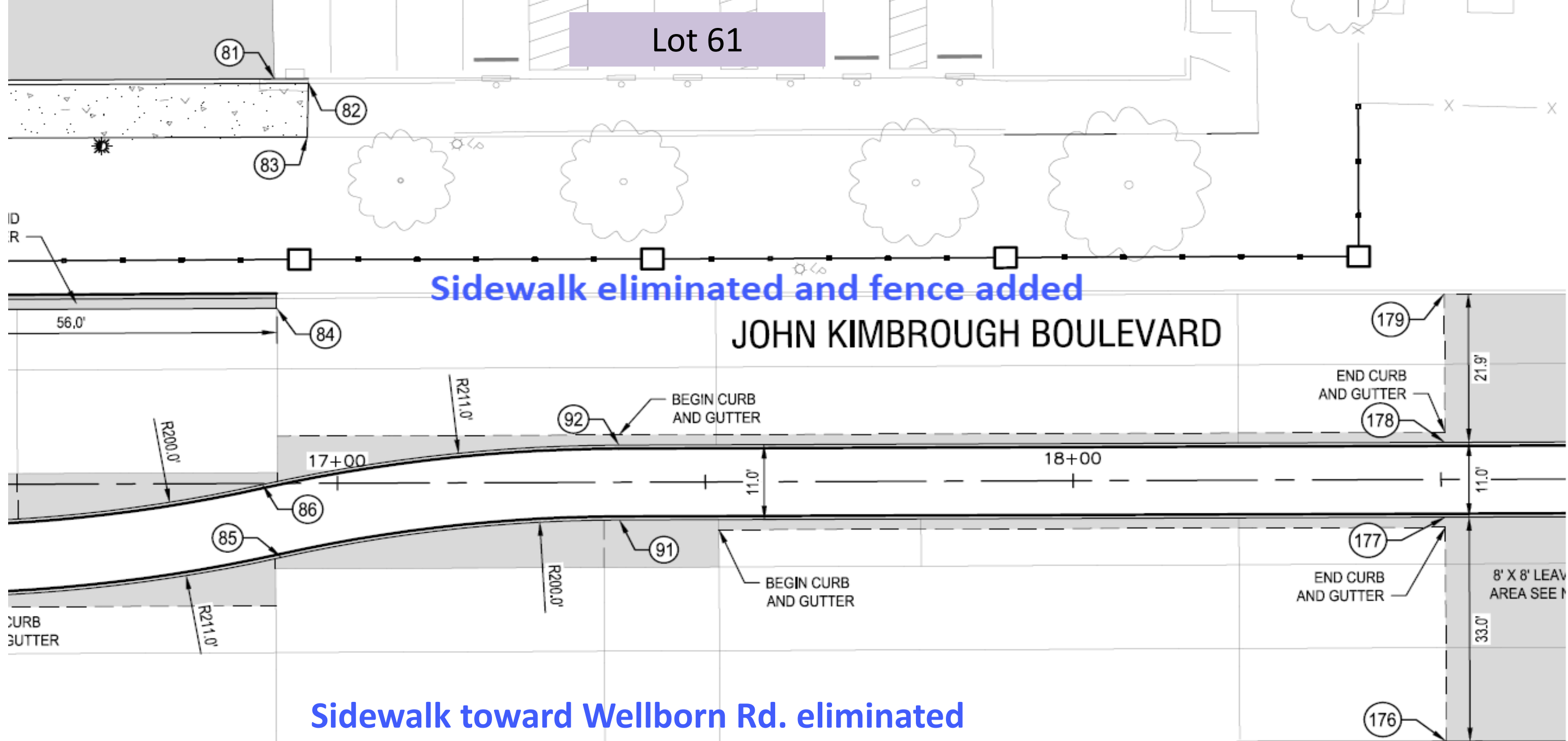




Stairs eliminated and replaced with terraced planters

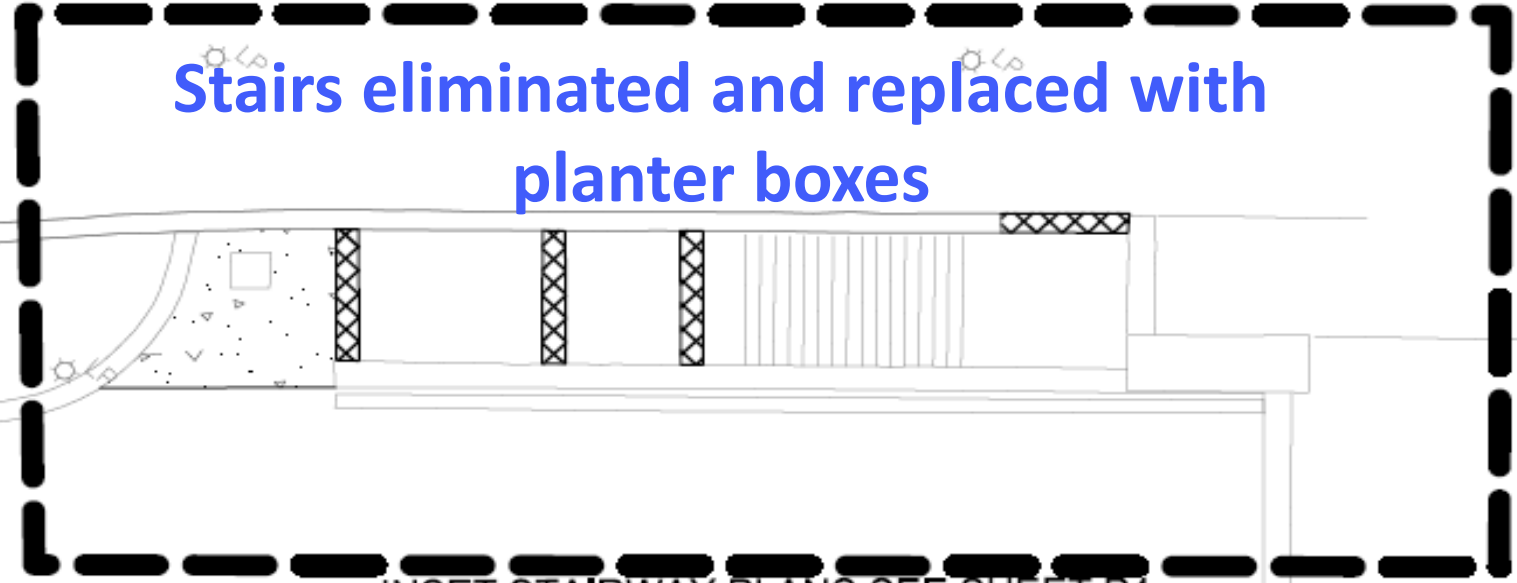


Lot 61



West Campus Garage

**Stairs eliminated and replaced with planter boxes**



# West End of Passageway

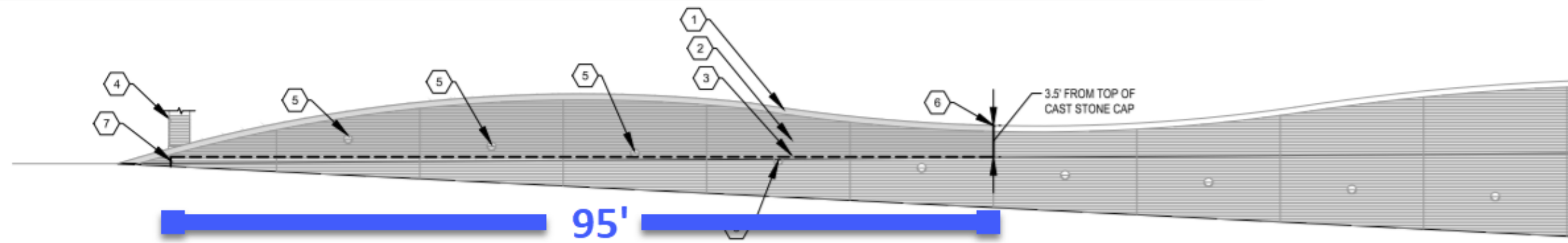




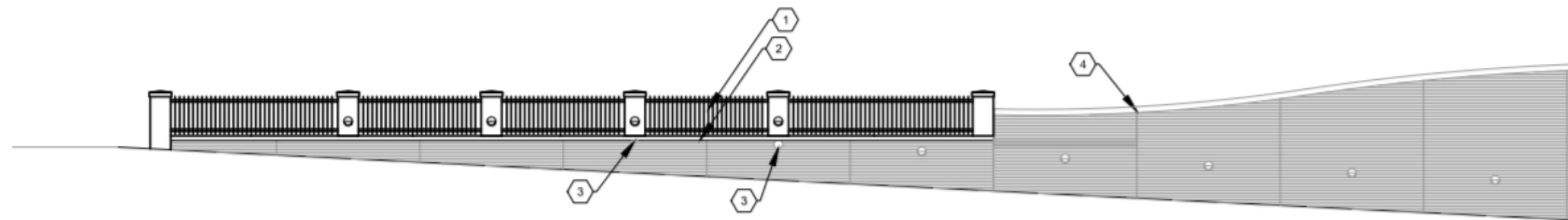
← 95' →



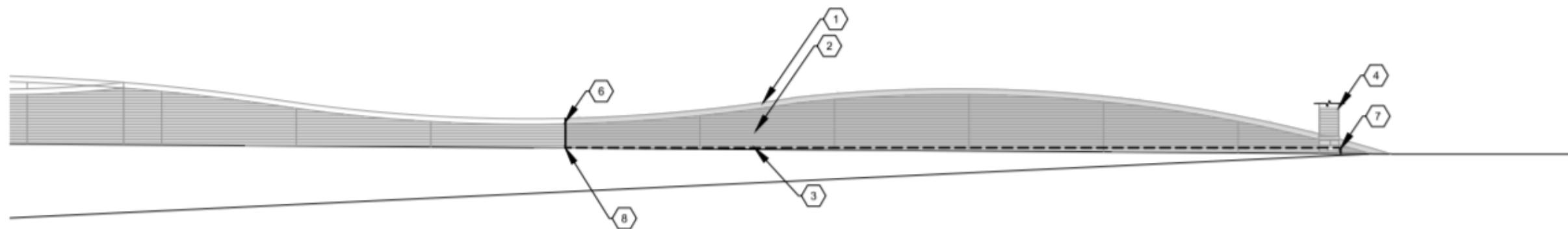
WALL PLAN VIEW



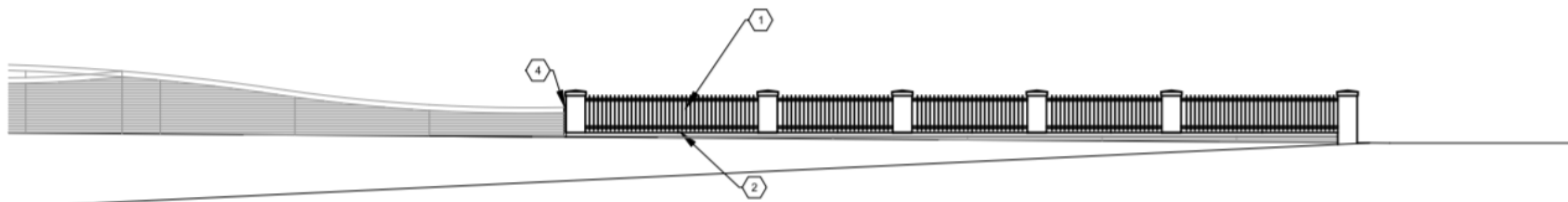
SOUTH FACE - DEMOLITION PLAN



SOUTH FACE - PROPOSED PLAN



NORTH FACE - DEMOLITION PLAN

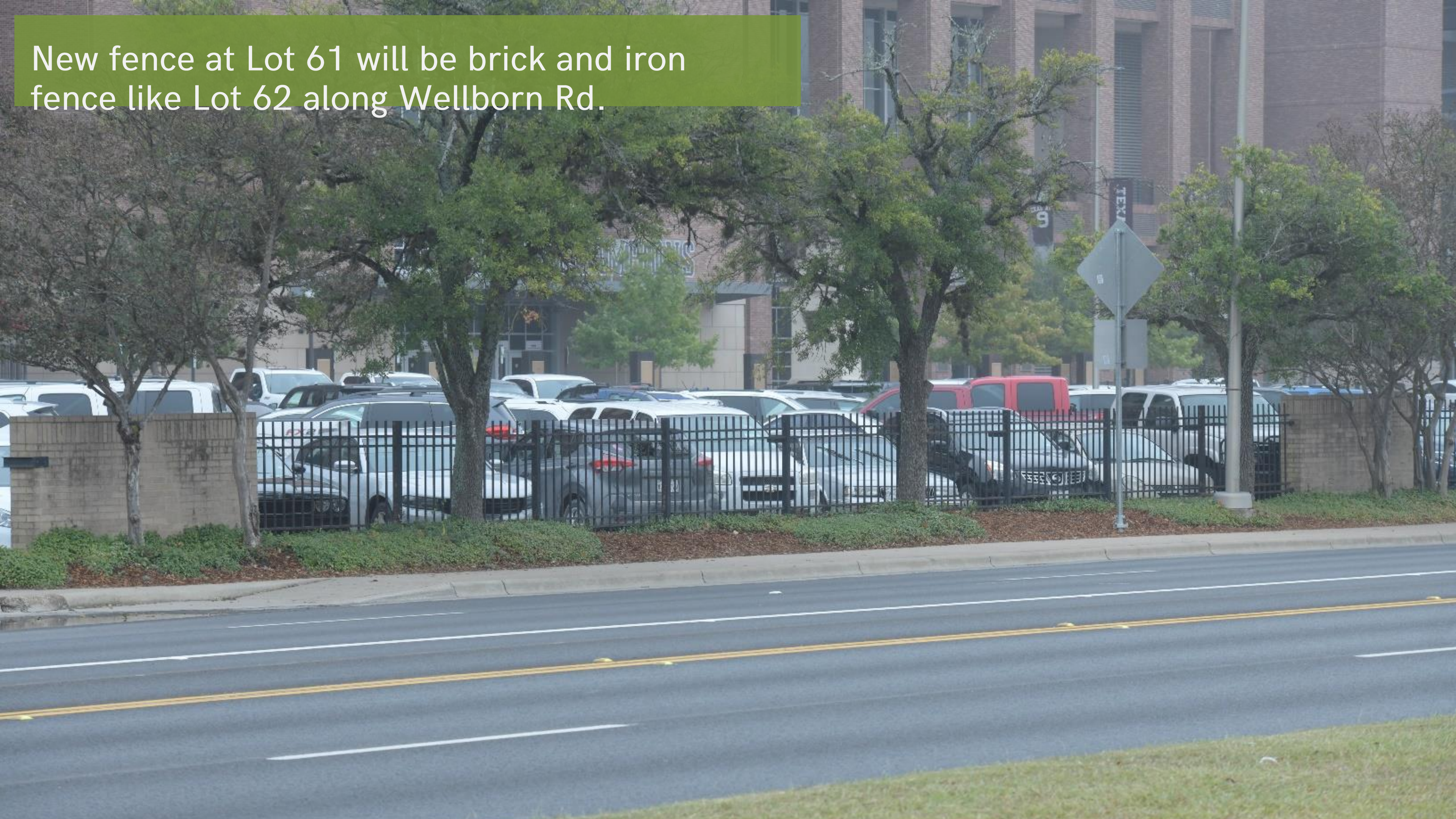


NORTH FACE - PROPOSED PLAN

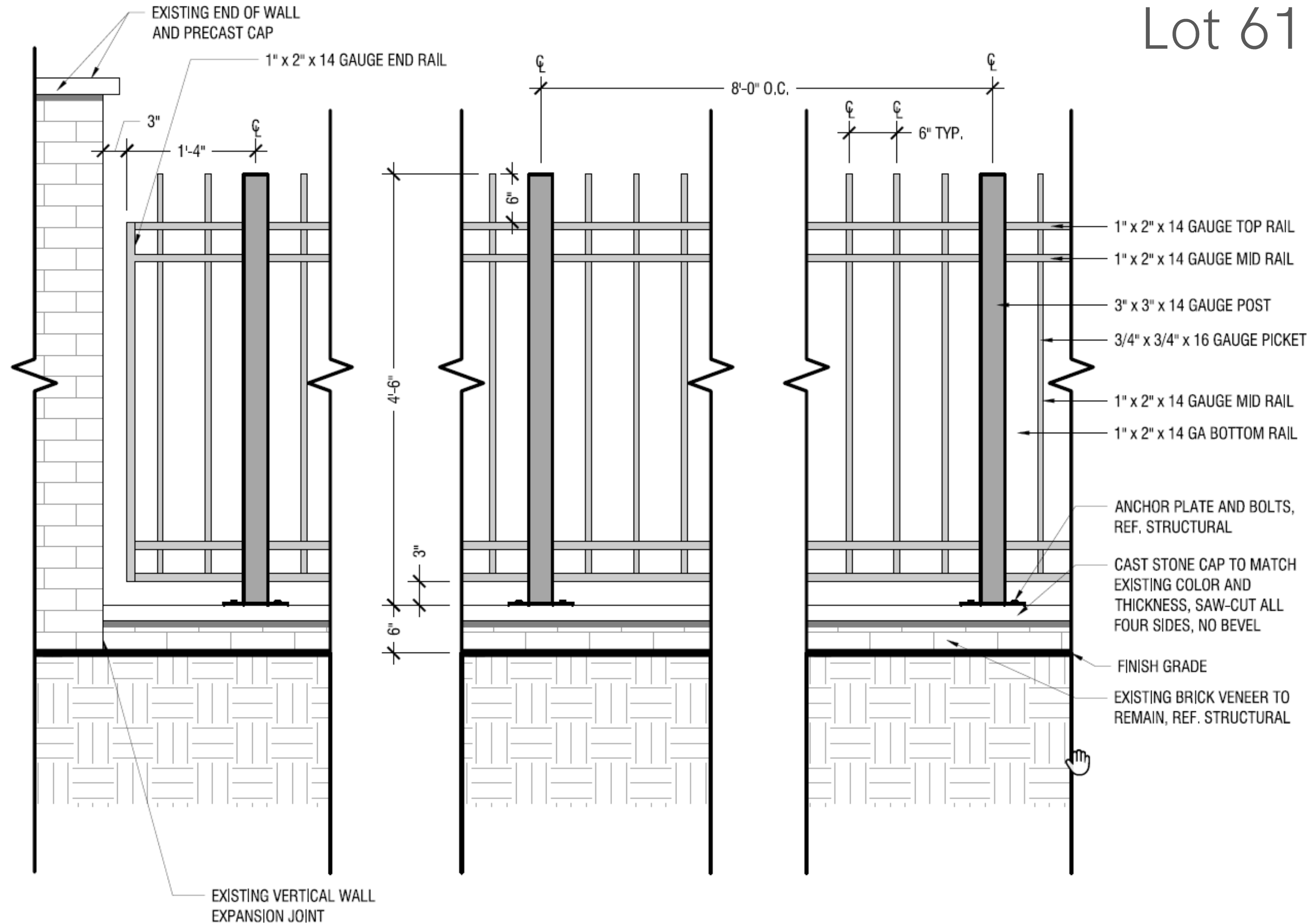
Sidewalks to Wellborn Rd. eliminated;  
fence and landscaping added



New fence at Lot 61 will be brick and iron fence like Lot 62 along Wellborn Rd.



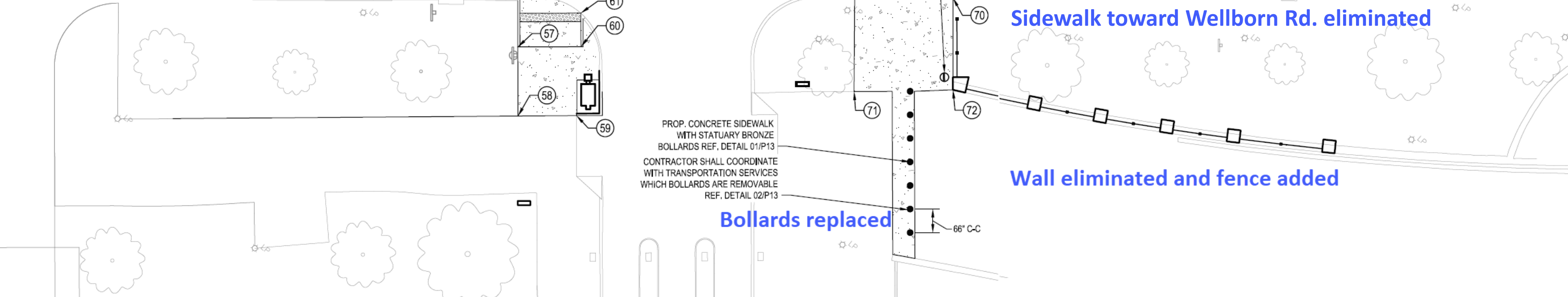
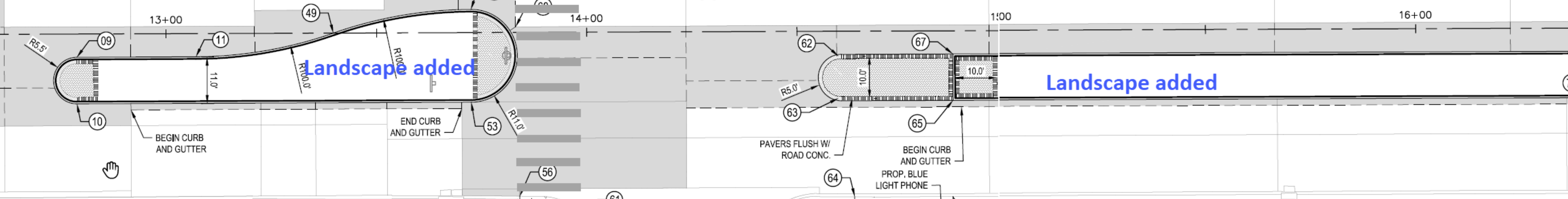
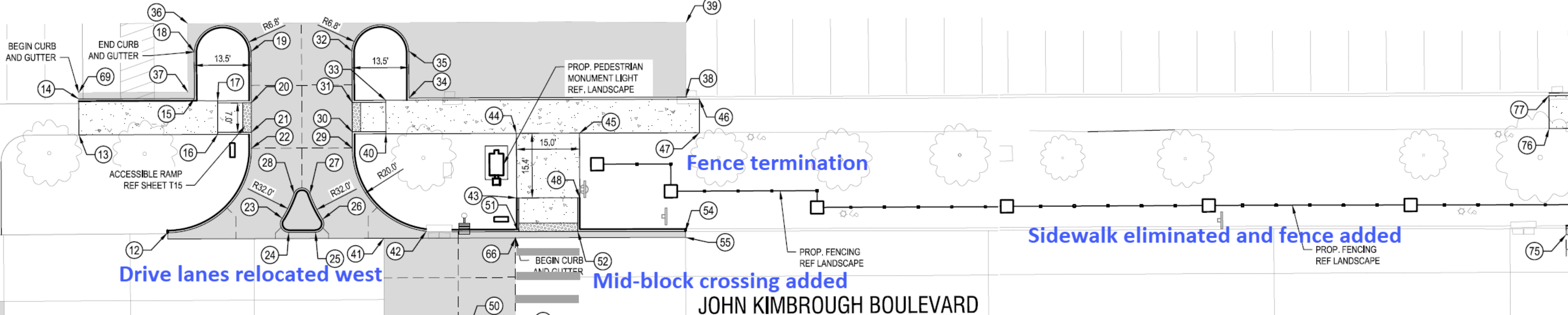
# Lot 61 Fence







**Relocated drive lanes at Lot 61  
align with drive lane within the lot**





# Alternate Options





Alternate options include removing and replacing light towers

# Questions?

