

DATE
HERE

Penberthy Blvd Old Main Drive Updates

CLINT WILLIS, ASSOCIATE DIRECTOR



TEXAS A&M UNIVERSITY
Transportation Services

Transportation Services



- **Penberthy Boulevard Expansion**
- **Old Main Drive Transit Hub & Multiuse Path**

Penberthy Boulevard Expansion

- Becoming a main entrance to West Campus
- Alternate, parallel path to Wellborn Road
 - During construction of Bush/Wellborn grade separation
 - Everyday traffic congestion mitigation
 - Gameday and event traffic flow improvement
- Multimodal thoroughfare for people entering and exiting campus
- Stakeholder engagement: TSAC, Rec Sports, Athletics



Penberthy Boulevard Expansion

- Added to the capital plan in May by BOR
- Anticipated cost: \$5,635,000
 - \$2M funded centrally
 - Balance funded by Transportation Services
- Widens road from two lanes to four from George Bush Drive to John Kimbrough Boulevard, adding multiuse paths on both sides
- New street and pedestrian lighting; no changes to domestic water, sanitary sewer or thermal lines

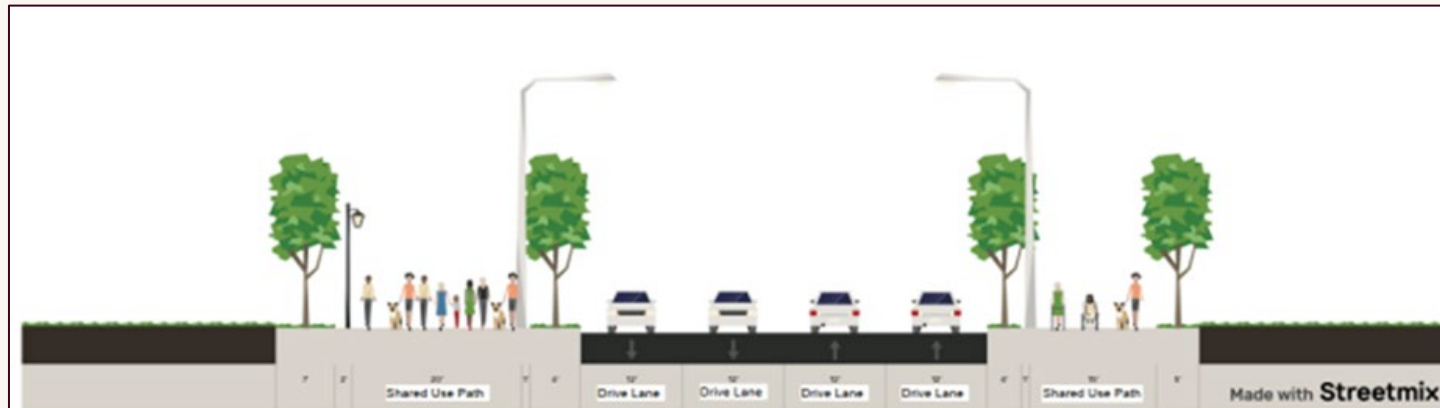
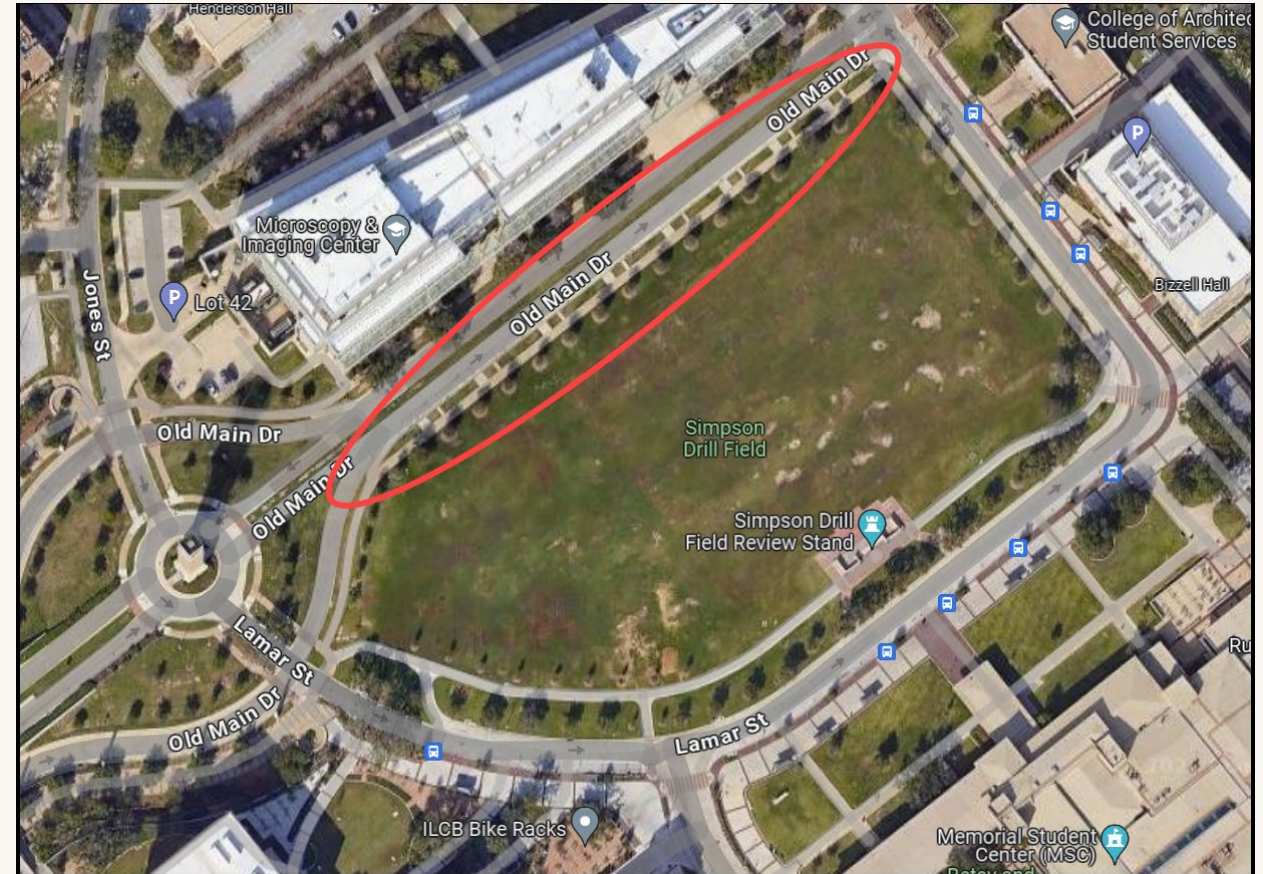


Figure 3- Typical Street Cross Section**

** Street cross section is for reference only. Full design will be utilized to determine lighting fixtures, planting requirements, and additional furnishing for reconstruction project. **

Old Main Transit Hub & Multiuse Path

- Creates transit hub to simplify bus routes, reduce transfer distances, enhance student mobility and move buses out of the highly congested Trigon area
- Serves riders more efficiently by use of west campus roads and routes not possible from Trigon
 - Everyday traffic congestion mitigation
 - Gameday and event traffic flow improvement
 - During construction of Bush/Wellborn grade separation
- Facilitates safe, efficient mode separation, reducing conflicts and accidents, and encouraging use of multiple modes
- Creates clear connection from Academic Plaza to West Campus
- Stakeholder engagement: TSAC, Student Affairs, Commandant, SSC



Old Main Transit Hub & Multiuse Path

- Anticipated cost: \$625,000 funded by Transportation Services
- Concept includes:
 - New bus shelter design that preserves critical sight lines and historic views
 - Concrete surface from shelters to Old Main Drive curb
 - Moves bike lanes from street by creating new multimodal path between bus shelters and Simpson Drill Field with pole and chain separation from drill field
 - Preserves of existing trees and roadway footprint

